



The 7th China (Nanjing) Cheerleading Open

9 – 13 June 2019

Organized by: People's Government of Nanjing City

China Ministry of Sports

Supported by: China Cheerleading Association

Managed by: Nanjing Xinhengding Sports Promotion Co., Ltd

Sanctioned by: International Cheer Union





Contents

Tentative Schedule..... 3

General Info.....3-4

Divisions.....5-7

Team & Routine Requirements..... 8-10

 Team Cheer Divisions..... 8-9

 Cheer Dance Divisions..... 9-10

Package Prices..... 11-12

City Tour Plan..... 13

Reservation Instruction..... 14

 Deadline and payment..... 14

Contacts.....15





Tentative Schedule of Events

No.	Date	Event	Place
1	9 June, 2019	Teams arrive and register with CCA staff; Teams warm-up	Nanjing
2	10 June, 2019	Teams warm-up; VIP reception; First section of competitions	Nanjing
3	11 June, 2019	Opening ceremony; Second and third section of competitions	Nanjing
4	12 June, 2019	Nanjing city tour (International teams)	Nanjing
5	13 June, 2019	Teams Departure	Nanjing

*We strongly recommend international teams to fly in and out of **Nanjing** city for transport convenience.

General Information

◆ Competition Structure

The 7th China (Nanjing) Cheerleading Open will take place in 9-13 June 2019. The performance orders of the competitions will be randomly selected in early-June 2019 and will be sent out to those teams who successfully register for the competitions.



◆ Awards

The organization committee will award the top 3 teams of each division with excellence of certificates, medallions and trophies. Each team member will receive a participation of medallion and certificate.

◆ VIP Reception

The organization committee will host a welcome VIP reception for the VIPs and coaches of international teams in 10 June. The maximum limitation of representatives from each team is three. If you have more to come, please contact ccachina006@163.com for more info.



◆ Live Streaming

The event will be broadcast live. You could download the app named **Sina Sports** with the logo attached. Go to **Sina Sports** and go to the programs of the CCA competition days then family and friends far away could watch your competition and share your excitement and fun!





Divisions

◆ Cheer

Division 组别	Category 项目	Age (Years old) 年龄(岁)	#of athletes 运动员人数
Mini Small Coed	Prep (L1)	6-13	8-15
	Team Cheer (L1-L2)		
Mini Small All Girl	Prep (L1)		
	Team Cheer (L1-L2)		
Mini Large Coed	Prep (L1)	6-13	≥16
	Team Cheer (L1-L2)		
Mini Large All Girl	Prep (L1)		
	Team Cheer (L1-L2)		
Junior Small Coed	Prep (L1)	12-19	8-15
	Team Cheer (L1-L2)		
	Team Cheer (L3-L4)		
Junior Small All Girl	Prep (L1)		
	Team Cheer (L1-L2)		
	Team Cheer (L3-L4)		
Junior Large Coed	Prep (L1)	12-19	≥16
	Team Cheer (L1-L2)		
	Team Cheer (L3-L4)		
Junior Large All Girl	Prep (L1)		
	Team Cheer (L1-L2)		
	Team Cheer (L3-L4)		
Senior Small Coed	Team Cheer (L4)	18-35	8-15
	Team Cheer (L5)		
	Team Cheer (L6)		
Senior Small All Girl	Team Cheer (L4)		
	Team Cheer (L5)		
	Team Cheer (L6)		
Senior Large Coed	Team Cheer (L4)	18-35	≥16
	Team Cheer (L5)		
	Team Cheer (L6)		
Senior Large All Girl	Team Cheer (L4)		
	Team Cheer (L5)		
	Team Cheer (L6)		



Master Small Coed	Team Cheer (L4)	35 years and older	8-15
	Team Cheer (L5)		
	Team Cheer (L6)		
Master Small All Girl	Team Cheer (L4)		
	Team Cheer (L5)		
	Team Cheer (L6)		
Master Large Coed	Team Cheer (L4)	35 years and older	≥16
	Team Cheer (L5)		
	Team Cheer (L6)		
Master Large All Girl	Team Cheer (L4)		
	Team Cheer (L5)		
	Team Cheer (L6)		
Open Small Elite Coed	Team Cheer (L5)	14 years and older	8-15
Open Small Elite All Girl			
Open Large Elite Coed			≥16
Open Large Elite All Girl			
Open Small Premier Coed	Team Cheer (L6)	15 years and older	8-15
Open Small Premier All Girl			
Open Large Premier Coed			≥16
Open Large Premier All Girl			
*Open Paracheer	Team Cheer L1~L2	6 years and older	≥5
*Open Special Abilities Cheer	Team Cheer L1~L2		

1. The event organizer is entitled to split or combine a certain of divisions depending on the amounts of teams participating in the same divisions.
2. *Open Paracheer Teams must comprise of 25% or more athletes with disabilities per team.
3. *Open Special Abilities Teams must comprise of 50% or more athletes with intellectual disabilities per team.

◆ Performance Cheer

Division 组别	Category 项目	Age (Years old) 年龄(岁)	#of athletes 运动员人数
Tiny	Small Team Cheer Pom	3-7	8-15
	Large Team Cheer Pom		16-24
	Small Team Cheer Hip Hop		8-15
	Large Team Cheer Hip Hop		16-24
	Small Team Cheer Jazz		8-15
	Large Team Cheer Jazz		16-24
Mini	Small Team Cheer Pom	6-13	8-15
	Large Team Cheer Pom		16-24
	Small Team Cheer Hip Hop		8-15
	Large Team Cheer Hip Hop		16-24



	Small Team Cheer Jazz		8-15
	Large Team Cheer Jazz		16-24
Junior	Small Team Cheer Pom	12-19	8-15
	Large Team Cheer Pom		16-24
	Small Team Cheer Hip Hop		8-15
	Large Team Cheer Hip Hop		16-24
	Small Team Cheer Jazz		8-15
	Large Team Cheer Jazz		16-24
Senior	Small Team Cheer Pom	18-35	8-15
	Large Team Cheer Pom		16-24
	Small Team Cheer Hip Hop		8-15
	Large Team Cheer Hip Hop		16-24
	Small Team Cheer Jazz		8-15
	Large Team Cheer Jazz		16-24
Master	Small Team Cheer Pom	35 years and older	8-15
	Large Team Cheer Pom		16-24
	Small Team Cheer Hip Hop		8-15
	Large Team Cheer Hip Hop		16-24
	Small Team Cheer Jazz		8-15
	Large Team Cheer Jazz		16-24
Open	Small Team Cheer Pom	14 years and older	8-15
	Large Team Cheer Pom		16-24
	Small Team Cheer Hip Hop		8-15
	Large Team Cheer Hip Hop		16-24
	Small Team Cheer Jazz		8-15
	Large Team Cheer Jazz		16-24
	Doubles Pom		2
	Doubles Hip Hop		2
	Doubles Jazz		2
*Open Paracheer	Team Cheer Pom	6 years and older	≥5
	Team Cheer Hip Hop		
*Open Special Abilities Cheer	Team Cheer Pom		
	Team Cheer Hip Hop		

1. The event organizer is entitled to split or combine a certain of divisions depending on the amounts of teams participating in the same divisions.
2. *Open Paracheer Teams must comprise of **25%** or more athletes with disabilities per team.
3. *Open Special Abilities Teams must comprise of **50%** or more athletes with intellectual disabilities per team.



Team & Routine Requirements

◆ Team Cheer Divisions Regulations

A) Cheer Level

Team Cheer divisions will compete according to the following cheer level rules

1. Elite Divisions: ICU Elite, Equivalent to IASF Level 5
2. Premier Divisions: ICU Premier, Equivalent to IASF Level 6
3. Senior Divisions: Equivalent to IASF Level 4
4. Junior Divisions: Equivalent to IASF Level 2

B) Team Size / Number of Athletes per Team

1. Small Division: minimum eight [8] athletes, maximum [15] athletes.
2. Large Division: minimum eight [16] athletes.
3. Open Paracheer and Open Special Abilities Cheer Division: minimum eight [5] athletes.

*The competitors who begin a routine must remain the same throughout the course of routine. A performer is not permitted to be “replaced” by another performer during a routine.

C) Age of Athletes

1. Elite Division: Fourteen [14] years or older within the year of the competition.
2. Premier Division: Fifteen [15] years or older within the year of the competition.
3. Master Division: Thirty-five [35] years or older within the year of the competition.
4. Senior Division: Eighteen [18] to thirty-five [35] years old within the year of the competition.
5. Junior Division: Twelve [12] to nineteen [19] years old within the year of the competition.
6. Mini Division: Six [6] to thirteen [13] years old within the year of the competition.

D) Time of Routine

1. Cheer Portion: Can be placed in the beginning or middle of routine. Time recommendation of thirty [30] seconds.

2. Music portion: Two minutes, thirty seconds [2:30]

E) Performance Surface

The performance floor will be approximately **46 feet x 46 feet** (14 meters x 14 meters). The surface will be a sport court (indoor sports floor). Teams may line up anywhere inside the competition area. No penalty for stepping outside the area.



◆ Performance Cheer Divisions Category Definition

A) Cheer Hip Hop

Incorporates street style influenced movements and rhythms with an emphasis on execution, style, creativity, body isolations and control, rhythm, uniformity and musical interpretation. There is also an additional focus on athletic incorporation such as jumps, freezes/stalls and other tricks.

B) Cheer Jazz

Incorporates stylized movements and combinations, formation changes, group work and technical elements. An emphasis is placed on proper technical execution, extension, control, body placement, style and continuity of movement along with team uniformity.

C) Cheer Pom

Incorporates the concepts of Jazz and Hip Hop with an emphasis on choreography, proper technical execution, visual effect, creativity, staging and team uniformity. **Poms are to be used throughout the routine.** Important characteristics of this type of routine include synchronization and visual effect, clean and precise motions, strong pom technique, the incorporation of dance technical elements and dance styles. Visual effects include level changes, group work, formation changes, the use of different color poms, etc.

◆ Performance Cheer Divisions Regulations

A) Team Size / Number of Athletes Per Team

- 1.Small Division: minimum eight [8] athletes, maximum [15] athletes.
- 2.Large Division: minimum eight [16] athletes, maximum [24] athletes.
- 3.Open Paracheer and Open Special Abilities Cheer Division: minimum eight [5] athletes.
- 4.Double Division: [2] athletes.

* The competitors who begin a routine must remain the same throughout the course of a routine. A performer is not permitted to be “replaced” by another performer during a routine.



B)Age of Athletes

Open Division: Fourteen [14] years or older within the year of the competition.

Master Division: Thirty-five [35] years or older within the year of the competition.

Senior Division: Eighteen [18] to thirty-five [35] years old within the year of the competition.

Junior Division: Twelve [12] to nineteen [19] years old within the year of the competition.

Mini Division: Six [6] to thirteen [13] years old within the year of the competition.

Tiny Division: Three [3] to seven [7] years old within the year of the competition.

C)Time of Routine : [1:45]-[2:30]. One minute and forty five seconds to two minutes, thirty seconds

D)Performance Surface

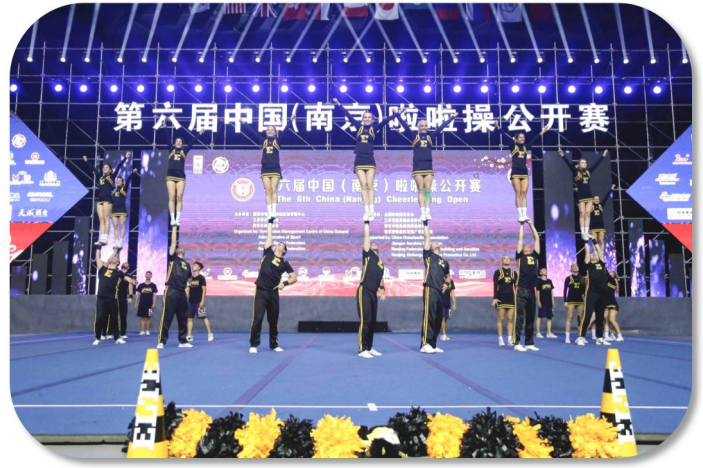
The performance floor will be approximately **46 feet x 46 feet** (14 meters x 14 meters). The surface will be a marley floor. Teams may line up anywhere inside the competition area. No penalty for stepping outside the area.

Note: The 2019 China(Nanjing) Cheerleading Open will follow the International Cheer Union's Rules and Scoresheets. Please refer to www.cheerunion.org. for more details.

Package Prices

◆ The package includes:

- (1) Airport transfer and transportation between hotel and venue;
- (2) Accommodations (4 nights);
- (3) Three main meals everyday: breakfast, lunch and dinner in 9-13 June 2019;
- (4) Culture Exchange and city Tour in Nanjing;
- (5) All taxes are included.



◆ Note:

- (1) NONE OF THE PRICES BELOW INCLUDES AIRFARE;
- (2) To help you with the competition and accommodations during your stay in Nanjing , there will be one CCA staff/volunteer who speaks either **your language or English** to help you with some great competition and culture experience here.
- (3) This package will be also offered with the same price to the family and friends who accompany you to the events.

◆ Prices:

FOUR NIGHTS in Nanjing

(9-13 June, 2019)

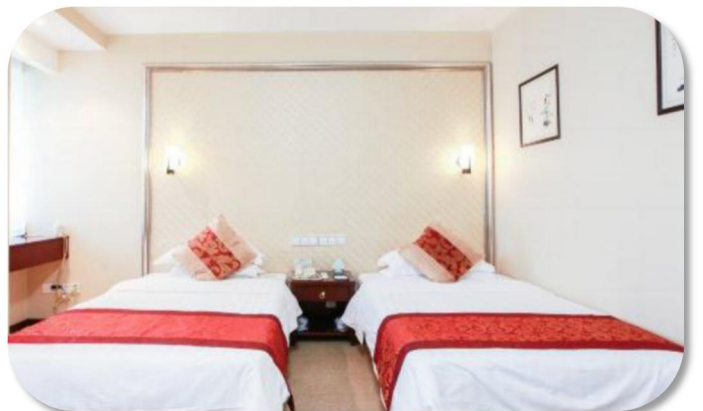
Double..... USD320.00/PAX

Single..... USD400.00/PAX

EXTRA NIGHT

Double.....USD80.00/PAX

Single.....USD100.00/PAX



◆ **Hotel:**

The hotel will be 3 stars and above in Nanjing city and specific info will be updated;
Rooms will be available for check-in after 13:00pm;

◆ **Transportation:**

Airport bus pick-up service will be offered to pick all those who buy the package above and arrive in Nanjing city for Nanjing event. We strongly recommend it that you contact CCA at ccachina006@163.com before booking your round-trip flights for airport transfer service.



As mentioned above, the event ambassadors (CCA staff/volunteers) will be there to help you in the airport. The contact of each team's event ambassador will be sent to a team leader/coach as soon as the registration process finished. Should you need any help with the airport transportation, do not hesitate to contact ccachina006@163.com in advance for more information.

◆ **Meals:**

Breakfast, lunch and dinner in 9-13 June, 2019 are included in the package. Each breakfast is included in the hotel accommodation. Lunch and dinner of buffet will be served in both Chinese and Western styles.





Nanjing City Tour Plan

12 June

Time	Tour
Morning	Free time
Lunch	Hotel Canteen
Afternoon	Nanjing Museum
Dinner	Downtown Restaurant
Evening	Confucian Temple Street



- ◆ Nanjing Fuzimiao ("Confucian Temple"), is located in southern Nanjing City on banks of the Qinhuai River. Within the area are cultural attractions, arts, shopping, and entertainment.
- ◆ The Nanjing Museum is located in Nanjing, the capital of Jiangsu Province in East China. With an area of 70,000 square metres, it is one of the largest museums in China. The museum has over 400,000 items in its permanent collection, making it one of the largest in China. Especially notable is the museum's enormous collections of Ming and Qing imperial porcelain, which is among the largest in the world.





Reservation Instruction

To finish the registration process, simply fill out the forms attached through e-mail and send them back to ccachina006@163.com before **20 May, 2019**.

➤ Registration forms

(1. Registrations-cheer/1.Registration-performancecheer; 2.Team Roster; 3.Rooming list)

➤ Flight Info form

You should also send documents as below to ccachina006@163.com before **25 May, 2019**.

➤ Agreement of Compliance

➤ Team Photo

➤ Music (Mp3)

◆ DEADLINE

The deadline for submitting the registration documents is due to **20 May, 2019**.

◆ PAYMENT

The deadline for the payment is on **1 June 2019**. Please ask your bank to pay all wire transfer fees(including international transaction fee) and contact us before transferring the fee. Please wire bank transfer to:

Account name: Nanjing Xinhengding Sports Promotion Co., Ltd

Bank name: Industrial and Commercial Bank of China Limited

Account number: 4301031019100012341

Swift Code: ICBKCNBJJSP



Contacts

Option 1:

Our event specialists will be available between 9am-5pm before 9 June, 2019 (Beijing Time Zone). Should you have any competition-related problems, please do not hesitate to contact our event email ccachina006@163.com or specialists at:

Katie Ma: +8615850522742

Vanessa Gong: +8615952016221

Jenna Wei: +8618020182715

Option 2:

Search <https://www.facebook.com/profile.php?id=100010839937525> to follow China Cheerleading on facebook at for more updated competition info.

See you in Nanjing this June!

